



Mid-Year Review

Please take the time this month to catch up on any of the articles you may have missed along the way as we reach the half-way point in 2023.



[Ongoing Biochar Research: Into Ecological and Economically Sustainable Applications in Small and Mid-size Managed Ecosystems](#)



[Deforestation: Definitions, Trends, and Policies for Forests and Forest Products](#)



[ESG 101: Information for the Forest and Wood Products Sector](#)



[Carbon Capture Technologies and Natural Climate Solutions: 1+1 = 3](#)



[The Economic Importance of Credible](#)



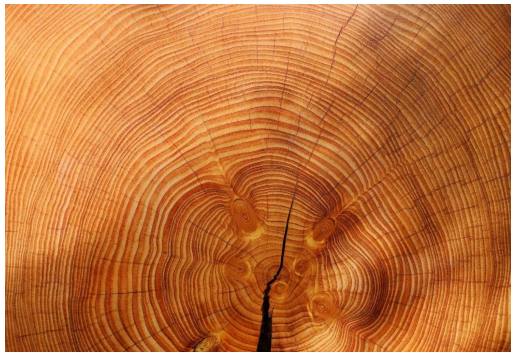
[The Accessible Community Tree Inventory:](#)



[Biochar Factsheet: Consider Biochar Benefits for Your Land](#)



[Who's Your Hero? Finding Community Leaders in Fire-Adapted Northeastern Minnesota](#)



[Units in Forest Carbon Numbers: A Primer](#)

HEALTH & WELLNESS

Workplace Well-Being

Wellness, Struggle, and Where to Start



Guest Article: By: Michelle Doerr, Anavah Consulting, LLC.

Michelle Doerr, President and Founder of Anavah Consulting, LLC consultant, coach and facilitator making the workplace and relate more authentic and reconnecting people with planet. In addition training, experience and expertise in executive leadership, conflict resolution, and organizational development, Michelle is a trained Wildlife Biologist and her experience in the natural resource profession and outdoor recreation aids in her understanding of the workplace needs of those that work with and for nature.

[Workplace Well-Being: Wellness, Struggle, and Where to Start](#)

MASS TIMBER REPORT - UPDATED

Key Takeaways
Nov. 2022

- MANUFACTURING**: Manufacturing of mass timber **INCREASED TO 11** companies in the U.S. & Canada since 2016. **11** WITH 3 MORE PLANNED.
- CONSTRUCTION**: Mass timber construction in the U.S. and Canada has **GROWN** by 16.8% since 2019.
- PROJECTS**: **1,400** mass timber projects have been constructed in the U.S. as of 2022, with the tallest being 25-stories.
- CODE CHANGES**: **8** states have **ADOPTED** code changes for tall mass timber provisions.
- CLIMATE CHANGE**: Mass timber and other building innovations can **REDUCE** emissions by **68%** (based on whole life cycle analysis of a mass timber building over a 60 year life span).
- FOREST GROWTH**: Even in the most aggressive mass timber demand scenario, forest growth in the U.S. **CONTINUES TO EXCEED** harvest by 18%.
- INNOVATION**: Continued **INNOVATION** is needed for hybrid buildings, workforce development, and improved circularity and sustainability of materials.

DOVETAIL PARTNERS To Read the full Report... MARCH 2023

[Key Takeaways: Mass Timber Report](#)

ESG 101: Information for the Forest and Wood Products Sector

- ESG FOR INVESTORS**: "ESG" stands for **environmental, social, and governance** factors. It **supports** companies committed to one or more ESG factors. Also called **sustainable investing, socially responsible investing, and impact investing**.
- INTERNATIONAL COLLABORATION**: As of December 2022, there are **5,319** signatories to the United Nations' Principles for Responsible Investment (PRI) representing US \$121 trillion (five times the annual US GDP).
- FINANCIAL SECURITY**: A review completed by NASDAQ found that over a five-year period, companies that are **ESG LEADERS** exhibited both **higher returns and less risk**.
- FINANCIAL IMPACT**: An analysis of more than 2,000 academic studies concluded that **70%** reported a **POSITIVE CORRELATION** between ESG and financial returns.
- LEGISLATIVE ACTION**: Anti-ESG or "boycott bills" have been proposed in **16** US states and five have enacted investment restrictions.
- CORPORATE REPORTING**: **96%** of the S&P 500 are producing sustainability and climate change related reports.
- ESG DEVELOPMENTS**: The forest and wood products sector is active in ESG, companies are being recognized for their leadership, and sector-wide strategies should be considered as ESG moves into more consistent regulatory frameworks.

DOVETAIL PARTNERS To Read the full Report... MARCH 2023

[Key Takeaways: ESG 101: Information for the Forest and Wood Products Sector](#)

Deforestation: Definitions, Trends, and Policies for Forests and Forest Products

Key Takeaways

- GLOBAL FOREST ASSESSMENT**: The FAO Global Forest Resources Assessment has been reporting on the extent of forest resources, their condition, management and uses since 1948. **1948**
- INTERNATIONAL COLLABORATION**: Deforestation is the conversion of forest to other land use - as defined in global forest assessments with the participation of more than **230** countries and territories.
- GLOBAL FOREST**: Today forests cover **31%** of the global land area; down from an estimated maximum of 57% at the end of the last ice age.
- POLICY CHANGES**: The EU, US, and other nations have **COMMITTED** to developing policies addressing the trade in products associated with the risk of deforestation.
- FOREST TRENDS**: The global rate of net forest loss has **SLOWED** by 40% since 2000. Reforestation globally **EXCEEDS** deforestation and forest recovery is stable to increasing.
- AGRICULTURE**: Strategies to reduce deforestation require changes to **agriculture** and the process is well underway. Since 1961, the global human population has increased by 47% but the amount of land used for agriculture has increased only **7%**.
- DEFORESTATION**: Nearly 90% of deforestation is related to **agriculture**, 95% of global deforestation occurs in tropical regions, and 60% of tropical forest loss is associated with expansion of three crops - **beef, soy, and palm oil**.

DOVETAIL PARTNERS To Read the full Report... MARCH 2023

[Key Takeaways: Deforestation: Definitions, Trends, and Policies for Forests and Forest Products](#)

Recognition & Gratitude to Our First Score Club

Dovetail Partners “First Score” Club 2023



Dovetail Partners is celebrating our 20th anniversary throughout 2023! In honor of our “**First Score**” we want to express our gratitude to those individuals and organizations that have gotten us to this milestone and also invite new and continued support. Please join our **First Score Club** and help secure Dovetail’s work for the next twenty years - our “second score”.

Members

Steve & Janet Bratkovich
Mike Carroll
Paul DeLong
Carmen & Sally Fernholz, A-Frame Farm
Kay & Annette Fernholz, Earthrise Farm
Patrick de Freitas
Heather Himler
Tom & Mary Kroll, Kroll Consulting Forestry, LLC.
Thomas McLain
Gerry Mich
Norm Moody
Robert Scheierl
Beth Waterhouse

Champions

John Bradfield, Dedicated to My fellow Wood Science Graduates and my Professors at NC State University 1977-1982

Leaders

Domtar
Jill & Charles Koosmann

Legends

Georgia-Pacific

[Donate Online Today](#)

Dovetail supports progress and change to address inequality.

Connect with Us

www.dovetailinc.org

+1-612-333-0430



Copyright © 2023 Dovetail Partners, Inc. All Rights Reserved.

Dovetail Partners is a 501(c)(3) nonprofit organization.
Dovetail Partners, Inc. is an equal opportunity employer.

Dovetail Partners Inc. | 528 Hennepin Ave., Suite 303, Minneapolis, MN 55403

[Unsubscribe katie@dovetailinc.org](mailto:katie@dovetailinc.org)

[Update Profile](#) | [Constant Contact Data Notice](#)



Try email marketing for free today!