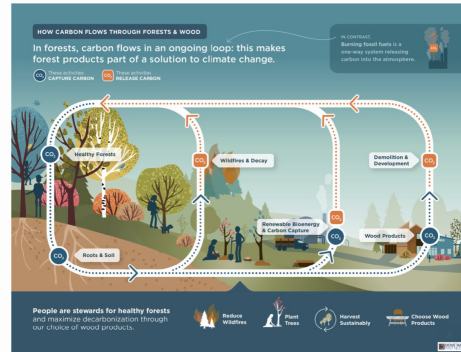




New graphics address forest and forest product carbon benefits

Climate change has led many people and organization to explore how we can pull more carbon out of the atmosphere and store it (carbon sequestration). This carbon collection can happen in many forms, and growing plants are one key method for storing carbon. Plants use CO₂ from the atmosphere to grow, and they release oxygen as their “waste product” - the opposite of animal metabolism. Carbon sequestration is more complex than just planting trees. Dovetail Partners recently collaborated with [Background Stories](#) to visually show how humans can more effectively support carbon sequestration while also meeting human needs for forest products. The graphics help audiences understand the relationship between healthy managed forests and better carbon storage. Arlene Birt, Founder of Background Stories, will present and collaborate with UN IPCC AR6 Synthesis Report authors at the Core Writing Team meeting in Dublin - as part of her ongoing role as graphics officer.



Carbon flows through an ongoing loop in forests: certain events cause carbon to be released, and other events cause carbon to be captured. This series of infographics captures the **complex** and **dynamic** nature of healthy forests.



[View Graphics](#)

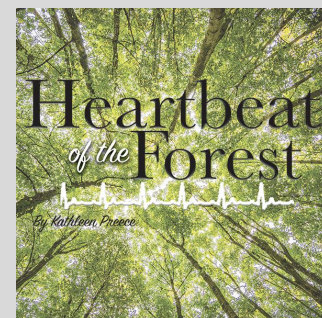
May's Heartbeat of the Forest

By Kathleen Preece

A friend recently sent me a note. The words below are all he said; they were all he needed to say. They brought me close to the window, inspiring me to take a walk through my pineries:

The first geese passed on 3/13. Could hear the first sharp-tails dancing on 3/15 and the first meadowlark showed up on 3/17. Found the first Pasque flowers in bloom and the first cranes passed on 4/4. Spring although cold was happening, until a 3-day blizzard arrived on 4/12 leaving 16"-20' of wet, wet snow and 3" more on 4/17. Life on the northern plains is all about patience and humility. You remain in my heart and knowing you are there helps keep me here.

Okay, so that last line was personal. But aren't all heartbeats intimate? Pulsing?



Continue Reading

Mass Timber Competition Announces Judging Panel

The Mass Timber Competition recognizes mass timber's innovative applications in architectural design and highlights its significant role in reducing the carbon footprint of the built environment. The competition aims to strengthen the mass timber sector and support increased employment in advanced wood products design, engineering, construction, and manufacturing sectors.



Building to Net-Zero Carbon

Upon closing the competition entry period on March 30, 2022, organizers of the [Mass Timber Competition: Building to Net-Zero Carbon](#) went to work securing an interdisciplinary panel of highly qualified professionals representing the fields of architecture, engineering, real estate development, environmental science, public safety, and forestry. The SLB recently announced the panel of judges, which includes Kathryn Fernholz of Dovetail Partners. The full list of panel members and additional information is available at the competition [website](#).

Read More

Dovetail Partners to present at Forest Products Society International Conference to be held June 13-16, 2022 in Madison, Wisconsin

The annual [FPS International Conference](#) promotes discussions on the state of forest products research and provides continued education about innovations by leading industry experts.

The FPS 2022 IC is dedicated to encouraging and facilitating the development and application of technical knowledge that will enable its attendees to derive maximum benefit from renewable wood-based materials and forest products.



Harry Groot, Dovetail Partners Associate, will be presenting on June 15th in the 1:30 to 5:30 PM Technical Session: Sustainable Agriculture Operations through the Expansion of Forest Bioeconomy. His presentation will address "Biochar Use in Viticulture and with Livestock".

The potential for biochar in these markets is significant. A 1% penetration of the viticulture market for both new plantings and mulching is estimated to require 10,000 tons per year or 2 to 20 times that volume of woody biomass feedstock depending on the production technology. One percent use in the livestock industry could consume 1.5 million tons of biochar (at rates of 0.3% for feed and 10% for manure management). As a solution for

[Register for Conference](#)

Dovetail Partners presents at World Forestry Congress



[Watch Session](#)

[AUSFPA Article](#)

[BWI Article](#)

Tamberly Conway, PhD and Kathryn Fernholz of Dovetail Partners presented at the World Forestry Congress held in Seoul, Korea in early-May.

Tamberly served as moderator during the side event, [Forests for Human Health and Well-being: Strengthening the forest-health-nutrition nexus](#), hosted and sponsored by the Korea Forest Welfare Institute.

Kathryn presented during the WFC session [“Advancing decent work, green jobs and sustainability in the forest sector”](#), organized in the context of sub-theme 3 [“The green pathway to growth and sustainability”](#). She noted the need to consider roles of women to ensure equality, as well as individual and organisation successes.

Crow Wing County to Begin the Safe Route Connection Project

Project Includes an Evaluation of Possible ATV Trail Connections to Local Cities

(Brainerd, MN) – The Crow Wing County Land Services Department is beginning the Safe Route Connection Project that will evaluate a possible connection between the Miller Black Bear ATV Trail and nearby cities within the County. The project will include several steps to support a comprehensive evaluation of potential routes. The project is expected to result in a final committee recommendation by the end of 2022.

The county has contracted with Dovetail Partners, a Minnesota-based non-profit, to manage the project. The first meeting of the Safe Route Committee will be held on Monday, May 23, 2022, from 6:00 – 8:00pm.

[More Information](#)

Dovetail Partners Included in Inaugural ENTER Print Annual

The debut issue of the ENTER print annual is now available and includes an article addressing The state of mass timber construction in Minnesota. Kathryn Fernholz, President of Dovetail Partners, was interviewed for the article. The 192-page issue can be purchased

for \$18 plus shipping. AIA Minnesota members will receive a copy in the mail.

Learn More



Dovetail supports progress and change to address inequality.

Connect with Us



www.dovetailinc.org

+1-612-333-0430

Copyright © 2022 Dovetail Partners, Inc. All Rights Reserved.

Dovetail Partners is a 501(c)(3) nonprofit organization.
Dovetail Partners, Inc. is an equal opportunity employer.