

SHARE:



[Join Our Email List](#)



The Outlook | March 2022

A trusted source of environmental information



The National Environmental Policy Act - A Need for Change

Several legislative measures of the 1960s and early '70s marked a turning point in the U.S. approach to environmental protection, with none more significant than the National Environmental Policy Act ([NEPA](#)). This report explores the framework of NEPA and suggests a pathway to the improvement of the integrity of U.S. environmental law and practices, and to more effective cooperation in addressing environmental protection at the global scale.



[View Report](#)

[Download Report](#)

Lead Author: Dr. Jim Bowyer
Supporting Authors: Kathryn Fernholz,
Harry Groot, Mark Jacobs, Dr. Tamberly
Corway
February 2022



Heartbeat of the Forest



by Kathleen Preece

As a first time contributor to Dovetail's newsletter (with anticipation of introducing you to the less-heard-of people who don't always make it into the 'big picture'), I want to tell you

about Stan Ringold and what he was thinking about during his career.

Stan Ringold thought about corners.

Yes – corners. Even at time of the season such as this - at the start of a new year when many of us dwell on the path ahead, and not on the curves and crooks that may potentially lie on the trail in front of us, Stan thought 'corners.' Stan Ringold worked for the Forest Service in northern California, returning to his native Minnesota in 1951 where he worked for the then M&O Paper Company. After time with Diamond Match in Cloquet, Stan became forester for the Rajala Timber Company in Deer River. That's where I met him.

"Stan's Corners" is the first in a series of stories that speak to the "heartbeat of the forest." The series will highlight the "less heard of" people and happenings that constitute the management, health, and sustainability of woodlands. Writers will include the details, nuances, and people who don't always make it into the "big picture" but are fundamental to the fabric of the state, national, and global scenes – particularly as those "scenes" relate to local, state, and Midwest forests.

Stan Ringold thought about corners.

Yes – corners. Even at time of the season such as this - at the start of a new year when many of us dwell on the path ahead, and not on the curves and crooks that may potentially lie on the trail in front of us, Stan thought 'corners.'

Stan Ringold worked for the Forest Service in northern California, returning to his native Minnesota in 1951 where he worked for the then M&O Paper Company. After time with Diamond Match in Cloquet, Stan became forester for the Rajala Timber Company in Deer River. That's where I met him.

He wasn't just any forester. Stan thought about markers, monuments, and bearing trees, and how many chains to the next intersection in a half, or a quarter, or an eighth section of land. He looked for the signs that help a person understand if they have gone too far, if they have taken too many steps - maybe even trespassed.

I want to tell you about Stan because he was one of the most obscure individuals to walk Minnesota's forests. And yet, his footprints are all over the woodlands that lie north in Itasca County - and in the land that spills over across Itasca's borders into Koochiching.

In so many ways, Stan was like many other foresters of his era - soft-spoken, taking his paces one at a time and in a measured walk. He was never certain about what was over the next rise, or around the bend. But he was always thinking - about corners.

Here at Dovetail Partners, we explore many aspects of our forests and related natural resources. Much of our research is built upon the foundational work of people like Stan, and the fact that there are junctions, intersections, and turning points to our work.

Stan didn't author the concept of corners. The idea of "ordering" the land actually was initiated even before the Constitution was written and signed. It began with the Land Ordinance of 1785 that established a rectangular survey system for surveying the lands of the Midwest. Created in anticipation of the influx of settlers, the ordinance established that public domain lands northwest of the Ohio River were to be surveyed into 36-square mile townships, and sold at no less than \$1 per acre. In tracts no smaller than 640 acres - a section.

Now known as the public land survey system, this system divided the western lands into grid-shaped townships and sections six miles square. Each township was comprised of 36 sections; each section had an area of one square mile (640 acres).

Collage: "Corners, Friends" - Stan Dickinson (left) and Stan Ringold, front, Sid Rommel.

"Stan's footprints are all over the woodlands of northern Minnesota, including Itasca and Koochiching Counties."

An original wood post monument found by Koochiching County below Hwy #1 east of Northome. Photo by Neal Adams. Courtesy Beltrami County GIS/Mapping.

[Continue Reading](#)

Learning from the Pagami Creek Fire - 10th Anniversary Events



The Pagami Creek Fire was a wildfire in northern Minnesota, United States, that began with a lightning strike on August 18, 2011. After weeks of slow growth, the wildfire quickly spread to over 92,000 acres during several days of hot, dry, windy weather. The fire was the largest naturally occurring wildfire in Minnesota in more than a century.

Events to acknowledge the 10th Anniversary of the Pagami Creek Fire are planned throughout March and April.

[Learn more about events planned](#)

New Minnesota Forestry series on KAXE/KBXE's Tuesday Morning Show

Mark Jacobs has produced a New Minnesota Forestry series on KAXE/KBXE's Tuesday Morning Show. Jacobs is a retired land commissioner from Aitkin County, MN and an associate of Dovetail Partners. The

conversations take an in-depth look at natural resource based issues important to our region; a discussion of problems but also creative solutions.

[Complete Listing](#)

91.7 KAXE
KBXE 90.5

FirstEnergy Commitment to Sustainability Recognized with Right-of-Way Steward Accreditation

Designation honors dedication to responsible and sustainable practices in vegetation management

The Right-of-Way Stewardship Council has named FirstEnergy Corp. (NYSE:FE) a Right-of-Way Steward Utility, an accreditation received by just eight electric utilities in the country. The national recognition is awarded to utilities who demonstrate standards of excellence and leadership in managing vegetation along transmission rights-of-way – the parcels of land FirstEnergy uses to build, repair, and maintain the transmission facilities that serve as the backbone of the electric grid.



The FirstEnergy logo consists of the word "FirstEnergy" in a bold, black, sans-serif font. A blue swoosh underline is positioned beneath the letters "Energy". A registered trademark symbol (®) is located at the end of the word.

[Read More](#)

MN Climate-Smart Natural and Working Lands Workgroup Formed

Minnesota's Climate Action Framework



We're sharing a draft of Minnesota's Climate Action Framework and asking for your input. We want feedback on how the priorities in this plan align with the needs of your community.

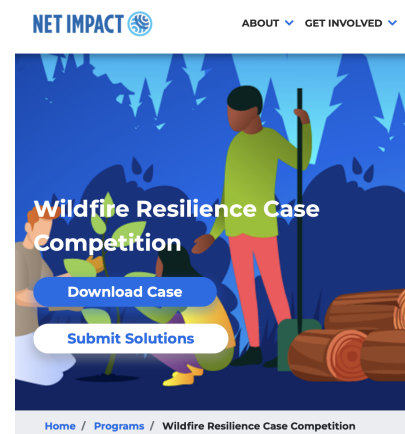
Minnesota is committed to taking action on climate change. The State of Minnesota's Climate Subcabinet and the Governor's Advisory Council on Climate Change released a draft Climate Action Framework that is intended to lay the foundation for climate action in Minnesota and guide state agencies and others to act to reduce emissions and build resiliency across Minnesota. The Subcabinet and Advisory Council are convening a series of stakeholder workgroups to assist with improving and finalizing the Climate Action Framework.

There are six work groups formed around each of six focus areas in the Framework. One of the groups is a Climate-Smart Natural and Working Lands Work Group. Mark Jacobs and Jim Bowyer of Dovetail Partners are participating in this work group with meetings scheduled throughout March and April 2022.

[Read More](#)

Wildfire Resilience Case Competition Launched

The impact of wildfires over the last ten years has been devastating for both communities and the environment. The U.S. Forest Service and the State of California have recognized the need to increase the pace and scale of forest ecosystem restoration treatments such as thinning and controlled burns. However, forest ecosystem restoration treatments produce a large quantity of wood waste by-products and are expensive to implement. There is a significant opportunity to address multiple environmental and economic challenges by finding innovative ways to use wood waste from forest restoration treatments.



The [2022 Wildfire Resilience Case Competition](#) invites innovative next-gen solutions that support forest ecosystem restoration, community resilience, and economic opportunity in forested communities affected by wildfire. Up to four teams will be selected as semi-finalists and receive expert coaching before pitching their proposal to a panel of expert judges. The judges will award

the grand prize of \$10,000 and \$5,000 and \$2,500 to second and third places, respectively. The competition is supported in part by the USDA Forest Service Wood Innovations Program. This institution is an equal opportunity provider.

Kathryn Fernholz, President of Dovetail Partners, is a member of the steering committee that put together the case brief that is guiding this case competition.

[Learn More](#)

Mapping a Path Forward for Colorado's Urban Wood Network

Workshop to be held on April 8

The Colorado State Forest Service (CSFS) & the Your Ash Is On The Line project team would like to welcome you to a hybrid in-person and virtual Urban Wood Utilization Workshop covering a wide range of engaging presentations. The 1st half of this workshop will be a hybrid event with live in-person and virtual discussions. The 2nd half will be a live in-person field demo and will not have a virtual option. The in-person is limited to 25 people. Kathryn Fernholz of Dovetail Partners will be presenting on a panel in the morning.



[More Information](#)

[Registration](#)

Dovetail supports progress and change to address inequality.

Connect with Us



www.dovetailinc.org

+1-612-333-0430

Copyright © 2022 Dovetail Partners, Inc. All Rights Reserved.

Dovetail Partners is a 501(c)(3) nonprofit organization.
Dovetail Partners, Inc. is an equal opportunity employer.